

LIVING ESTATE AUCTION

Monday Memorial Day May 29th, 2023 9:00 AM

608 Olive St. Louisburg, KS 66053

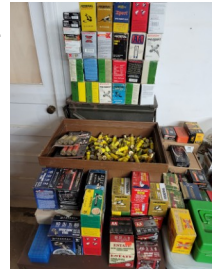
Directions: S of K-68 & Metcalf, go to 7th St & turn 1 block W. WATCH FOR SIGNS.

Auctioneer's Note: Please note the early starting time. With much to sell, plans are to run 2 rings.

2 GUN SAFES, FIREARMS, AMMUNITION, KNIVES



Winchester gun safe, touchpad lock; Cannon gun safe, key locking; long guns incl the following-Mossberg 12ga bolt action; Remington Model 11 12ga, semi-auto; Ruger .44 magnum rifle, auto; Vezir Arms Carrera tactical 12ga pump; Harrington & Richardson Model 176 10ga, long range; Mossberg Model 500 20ga, camo, accu-choke, 2-3/4 & 3"; Winchester Model 1906 .22 rifle, S, L, LR; Mossberg D-B .410 bolt action; Revelation 12ga single shot; Winchester Model 1902 .22 S, L single shot rifle; Westernfield Model 175-A Clect-choke 20ga bolt action, needs some work; New England HandiGun SB-2 45-70 gov't w/extra 22-250 barrel & scope; Rossi Model S41118 Snake



Charmer .410 3"; Cannon Breech 12ga single shot, needs spring; Long Tom 12ga single shot, 36" barrel; Marlin Glenfield Model 30A 30-30 rifle, lever action; Springfield Model 1878 trap door 45-70, marked "US 1878", engraved into stock "to the Capt of the Nemo"; Mossberg Model 935 12ga accu-choke, 2-3/4, 3, 3-1/2", like new; Mossberg Model 500 12ga pump, 2-3/4, 3", like new; Marlin Model 24 12ga pump, short barrel; Stevens 12ga coach gun, side by side hammer; hand guns incl-antique Smith & Wesson .32 short, break open; Rohm Valor .22 short 6-shot revolver Sontheim Brenz made in Germany; Cobray Model DD 45 L Colt double hammer break open pistol; Jennings Firearms Inc Model J-22 .22 LR automatic pistol; Raven Arms MP-25 .25 auto pistol-quantity of 2; Hawes Western Marshall Derringer .357 nickel finish, Germany; Armi Tanfoglio Model GT-27 .25 auto pistol w/extra mag; Taurus .357 Magnum 7-shot revolver w/6" barrel, stainless, like new; Rossi Model 720 .44 Special 5-shot, stainless; Canik TP9 SFX 9mm semi auto w/carry bag & 2 magazines, like new; Smith & Wesson Model 629-6 .44 magnum revolver, stainless, scarce 6" ported barrel; Kimber Desert Warrior .45 automatic w/box & papers, 5 magazines, like new; BB guns & pistols; several ammo boxes; much ammo incl many boxes of various gauge & varieties of shotgun shells; full & partial boxes many different calibers; extra cylinders, magazines & other parts; White Flyer targets; many old pocket knives; Old Timer gift set; misc.



AUTOMOTIVE, SHOP EQUIPMENT, TOOLS incl SNAP-ON, SCRAP

'73-'79 Chev Square Body parts incl 396 big block, transmission; car radios; Husky 60gal upright air compressor; smaller air compressor; transmission jack; engine hoist; 3T floor jack; chain hoist; Schumacher battery starter/tester; stacking tool boxes incl US General; power tools; impact tools; battery tools; SnapOn incl ratchets, sockets-regular & swivel, break-overs, extensions, half-moon wrenches, pliers, combo wrenches, more; other hand tools incl tap & die sets, Craftsman wrench sets incl SAE & metric, line wrenches, more, screwdrivers, many types of pliers, socket sets, chisels, punches, allen wrenches, more; Goodyear rolling work seat; hardware & organizers; shop fluids & sprays; tire chains; appr 200# #1 & #2 copper; more scrap.



4-WHEELER, MOWER, TIRES/WHEELS, OUTDOOR

Polaris Sportsman 500 4x4 4-wheeler, not running; Bolens MTD lawn tractor, 15.5hp, new battery; set/4 37" 14Wx15" mud tires on 6-lug wheels; set/4 37" Hummer tires on 16.5 wheels; log chains; boomers; some fishing equipment; Kingsford charcoal grill; misc related.



PRIMITIVES, COLLECTIBLES & HOUSEHOLD

Maytag wringer washer; comic book collection; 4 saddles incl English & Hereford brand Western; horse collar & bits; double tree & single tree; steel traps; pulleys; lanterns; license tags; butter churns; crocks; enamelware; old medicine bottles; old jars & bottles incl pop bottles; Avon bottles incl cars; Jewel Tea china-several pcs incl pitchers, s&p, casserole, platters, cups & saucers; Pyrex primary mixing bowl set; depression glass; oil lamp collection, all sizes; toy trucks, tractors & farm implements; figurines; many old books; LP records; corner curio, china & display cabinets; many more items not listed.



Clifford Studdard, owner

Anything designated day of sale takes precedence over any advertising. All items sell as is, where is, without warranty, expressed or implied, known or unknown. TERMS: Cash or approved checks & credit cards accepted. Not responsible for accidents. Concessions available.

Please Come!

Branden Otto, auctioneer 913-710-7111 www.ottoauctioneering.com