

MEMORIAL DAY PUBLIC AUCTION

Monday May 29th, 2017 10:00 AM
23955 W. 215th St. Spring Hill, KS 66083

Directions: From Hwy 169 & 215th St, go W on 215th 1½ mi to auction on S side or from I-35/Gardner Rd, S on Gardner Rd 3mi, then E on 215th 3 ½ mi. WATCH FOR SIGNS.

GYPSY WAGON, PICKUP, TRACTOR, CAMPER & MISC.

Replica of 18th century Gypsy Wagon, Amish undercarriage w/wooden spoke whls & hand carvings, 3-hole SS sink, hand wash sink, equip incl hot dog steamer, root beer barrel cooler; pretzel warmer(separate); '00 Ford F-150 XL, 190k mi; '52 8N Ford; 3-pt 5' Ford brush hog; '03 Flagstaff pop-up camper w/title, dbl bed & extra wide twin, table & 2 bench seats convert to sleeping, refrig, stove top connects inside or out, sink, elec AC & propane heat, awning; Kelly Trekker backpack w/telescoping frame, 2 sleeping bag compression kits, sleeping bags, Coleman cooler, Coleman PolyLite2 water Igloo(drink cooler), Little Playmate Igloo w/ice pack, army cot; dbl bike rack back of car, bicycle tube & tool kit, Sugino bicycle crank 175mm; wooden swing set w/fort & slide, elec grill-1yr old, used twice; charcoal grill; misc.



GUNS, GUN SAFE & COINS

20ga Western Field Model 175A C-lect choke; 12ga Western Field M550A - 2 3/4" chamber 26" c-lect choke USA; NewHaven Model 251C .22 LR only, made by OF Mossberg & Sons, Inc North Haven, Connecticut USA; Cross Model 38C/.177 CO-2 pellet gun; Winchester Fire Safe TS-22 holds up to 24 long guns, fire resistant up to 30min at 1400 degrees, 2yrs old, 50"x30"x22" 507 lbs; coins incl State Coin Collector Set Series 1999-2002; partial comp books of: Lincoln head ¢ 1941-2013; 60 buffalo nickels various dates 1913-1938; 60 "Mercury" head dimes various dates 1916-1945; 49 Liberty Standing quarters & 11 Washington quarters various dates 1916-1957; 20 Liberty Walking ½ \$s various dates 1916-1947; 8 Benjamin Franklin ½ \$s various dates 1948-1963; 38 "Morgan" \$s various dates 1879-1921; 12 Peace \$s various dates 1922-1925; misc collector's folders.

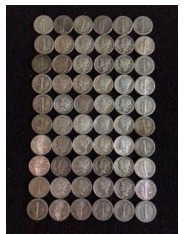


TRAILERS, MOWERS, TILLER, FARM & OUTDOOR

6'X16' Sure Trac ATV utility trlr w/title; Model 176 LTD trailer by Forest River, tandem axle, dual access, 4' folding gate, side ramps; motorcycle trlr, holds three, homemade; Cub Cadet 48" commercial, pull start; Cub Cadet walk behind lawn mower; 20" lawn mower; Int'l Harvester rototiller w/B&S eng; 20+ 16' cattle panels & 6' T-posts; 2 elec fencers; shovels, rakes, grass spreader, wheel barrow, garden cart, walk behind garden hoe, garden tools, flower pots; pig hut; rabbit cage; 2 five-year old female mixed-breed goats.

TOOLS, SHOP & RELATED

Sears/Craftsman 8" drill press, ½" chuck, 3-sp, 1/3hp; Sears/Craftsman 13" scroll saw; Craftsman table saw 10"belt driven 3hp; Skil 10" elec bandsaw; 7-1/4" circular SkilSaw; soldering gun kit; Craftsman drill press; Sears/Craftsman 4" belt & 6" disc sander; Ryobi 10" chop saw, Ryobi 18v batt powered reciprocal saw; Black & Decker 8" var sp drill; B&D high sp rotary tool; various tools; metal extension ladders; 30' wood SW Bell ext ladder; Homelite chain saw; clamps, power washer, air compressor; cotton work gloves; misc.



HO SCALE CIRCUS TRAINS & OTHER COLLECTIBLES

The Great Circus Train from Walthers, limited ed, incl 15 dbl-length flat cars, 3 heavyweight passenger cars, 1 colossal elephant car, 1 giant stock car, accessories incl easy to build wagon kits, trucks, trailers, circus wagons; Walthers HO scale Model based on restored steam locomotive #5629 a 4-6-2 (Pacific) which often pulled the Circus Train-this beautiful engine is highly detailed & ready to run; Roundhouse product HO scale P.T. Barnum & J.A. Bailey Circus train w/50' car set & a 34' car set; Roundhouse product HO scale Ringling Brothers Circus Train w/50' car set & a 34' car set-production was discontinued due to lack of copyright; Int'l Hobby Corp HO scale Carnival Motorized Carousel, Int'l Hobby Corp HO scale Ferris Wheel; train tables; Roseville tea set; Norman Rockwell plate w/figurines; china cat; antique male doll; Emmet Kelly clown doll; glass garden tray; bird house.



FURNITURE & HOUSEHOLD

Glass claw foot table; round oak pedestal table w/2 leaves & 2 rolling arm chairs; oak desk & chair; computer desk; 2 TV stand/ent units; pr club chairs; oak rocking chairs; desk organizer; end table; glass night stand, bdrm set w/hdbd, mirrored vanity & triple dresser; Norge refrigerator; Climax food & meat chopper; 16qt stock pot; Int'l Silver Co set/3 pedestal servers; silver plate 14" 5 light candelabra; water bath canning rack; 4qt elec ice cream maker; picture frames, Halloween décor; toys; umbrella stroller; Trailmaker backpack; misc items not listed.



Dave Bowman & Diane Diedrich, owners

Anything designated day of sale takes precedence over any advertising. All items sell as is, where is, without warranty, expressed or implied, known or unknown. TERMS: Cash or approved checks & credit cards accepted. Not responsible for accidents. Concessions available.

Please Come!

Branden Otto, auctioneer 913-710-7111 www.ottoauctioneering.com